



---

THE GRADUATE SCHOOL

# Graduate Student Experience

Dean Beth Mayer-Davis, PhD

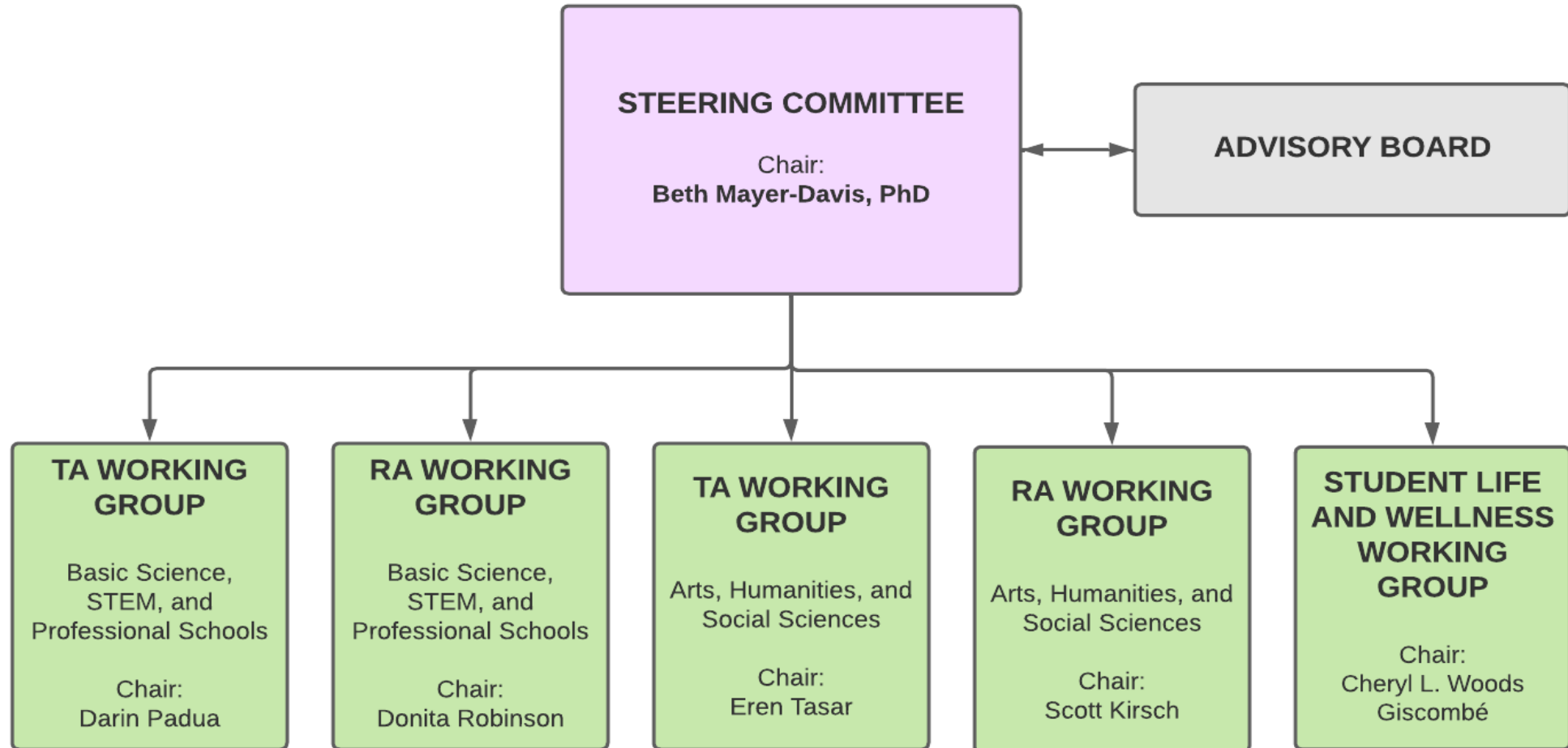
The Graduate School

February 23, 2024

# Overview

- Charge: conduct a comprehensive assessment of the graduate and professional student experience at Carolina to ensure our campus has the appropriate policies and practices in place to ensure both academic rigor and student success and wellbeing.
- Pay particular attention to the impact of graduate and professional student working conditions on the overall student experience.
- Attend to the full range of graduate student experiences, including international and online students, across master's and doctoral programs from STEM to the social sciences and arts and humanities.
- Develop recommendations and an implementation strategy, supported through ongoing biennial reviews to be incorporated into the usual program review process already coordinated by The Graduate School.

# Structure



# Short-term Policy Recommendations

The GSE delivered the following recommendations to the provost on February 1, 2024.

- **Campus Resource Navigation** - Develop and launch a curated digital platform – within the Graduate School website – where students can easily access resources to report adverse training conditions and to enhance wellness, and where faculty can easily access resources to support students (*in process*)
- **Teaching Assistant Training** - Require Teaching Assistant training for all graduate students serving as TAs. This requirement would be met by completing either the proposed University-level training or another existing unit- or program-specific training.
- **Assessment of Mental Health and Well-being Services** - review data on current availability of and demand for counseling across campus alongside industry standards and peer institutions to 1) assess UNC systems, policies, and procedures related to student access to counseling (e.g., Campus Health, CAPS, UNC Health, other campus- or community-based providers) and 2) recommend potential strategies to best meet the needs of UNC's diverse student population.
- **Faculty Mentor Training** - Require IDPs and mentor-mentee compacts for all graduate students, and mentor training for faculty serving on master's thesis or doctoral dissertation committees, incorporating training of graduate students as mentees.

# Working Groups' Charge

- Focus on data review (vs. collection) to inform implementation content and strategies for approved projects
- WGs will present recommendations to the Steering Committee for review/approval
- Identification of additional recommendations encouraged, though for a later date

<b>Working Group Assignments</b>
<b>1. Campus Resource Navigation (in progress)</b>
Student Life & Wellness
<b>2. Teaching Assistant Training</b>
TA: STEM and TA: Humanities
<b>3. Assessment of Mental Health and Well-being Services</b>
Student Life & Wellness
<b>4. Faculty Mentor Training (IDPs &amp; Compacts)</b>
RA: STEM and RA: Humanities

# Membership (in process)

**We have representation from all Schools across the University and key campus-wide offices.**

**Graduate / Professional Students are included throughout**

**The Steering Committee** is established (24 members).

**The Advisory Board** is established (35 members).

**The Working Group rosters** are being finalized now (~10 members each, including faculty, staff, students):

- Graduate and Professional Student Government representative
- The Graduate School representative
- Abacus Evaluation representative
- Steering Committee representative

# Resources

- Chancellor's Fellow (Victoria Bryant)
- The Graduate School team (communications, coordination)
- Abacus Evaluation team (embedded in working groups)
- Operational Excellence (if/when needed)

# Timeline and Goals

Activity	Spring 24	Summer 24	Fall 24	Spring 25	Summer 25	Fall 25
Submit initial recommendations to provost	√					
Submit initial report to provost (high-level implementation plan with budget)						
Supplemental data collection and analysis (via Abacus)						
Refine implementation strategies for initial recommendations						
Identify additional recommendations						Ongoing
Produce initial annual report on Graduate Student Experience						Ongoing
Initial implementation (TBD)						Ongoing
Initial evaluation (TBD)						Ongoing
Initiate biennial program review						Ongoing



Thank You

Questions?