

# Overview

- The Office of Undergraduate Admissions has the final decision-making authority for all candidates for undergraduate admission.
- The admissions office follows policies established by the Board of Governors and the Board of Trustees.
- By trustee policy, the admissions office also applies procedures approved by the Advisory Committee on Undergraduate Admissions, a faculty committee appointed by the Chancellor.

# Special Talent

- Trustee policy provides for the admission of students “who demonstrate special talent for University programs requiring such talent.”
- The Advisory Committee has approved intercollegiate athletics as one program requiring special talent.
- The committee has allocated 160 spaces in each entering first-year class for students who are recruited to participate in athletics.
- Each year other student-athletes apply and are admitted competitively and without specific consideration of their talent in athletics.
- The Advisory Committee reports annually to Faculty Council on athletics admissions, using guidelines developed by a working group.

# Committee on Special Talent

- The Advisory Committee has appointed a Committee on Special Talent to develop policies and procedures regarding special-talent admissions and review individual candidates who do not meet certain thresholds.
- The Committee on Special Talent consists of at least six voting members, the majority of whom must be tenured or tenure-track faculty members in the College of Arts and Sciences.
- The governance of the committee was reviewed and approved by the Faculty Committee on University Government in Spring 2014.

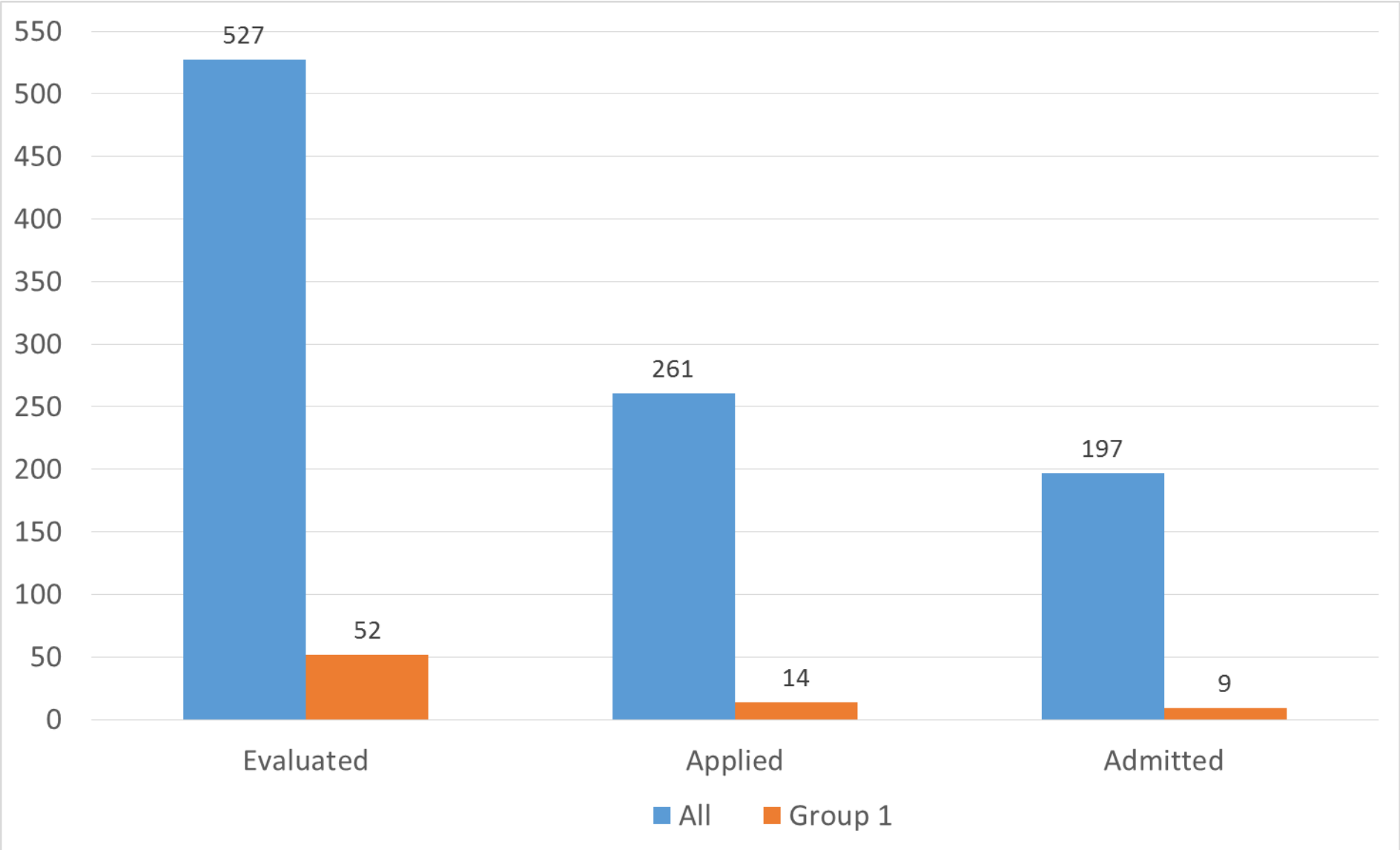
## Enrolling Student-Athletes—Class Entering 2015

- In 2015 the University enrolled a total of 188 new first-year student-athletes—152 through the special-talent provisions outlined above and another 36 through competitive review and without specific consideration of their talent in athletics.
- Nine of these students required review by the Committee on Special Talent.

## Evaluated – Applied – Admitted

- To yield this class of student-athletes, 527 candidates were presented for preliminary evaluation for admission. As a result:
  - The admissions office advised athletics that some students would not be admitted.
  - Athletics chose not to recommend other students for admission.
  - Other students chose to pursue other colleges and universities.
- Of the 527 students presented for preliminary evaluation, 261 applied for admission, and 197 were admitted.
- Of the 527, 52 were identified as requiring review by the Committee on Special Talent; 14 applied for admission, and nine were admitted.

# Evaluated – Applied – Admitted



# Special-Talent Student-Athletes by Group, 2006-2015

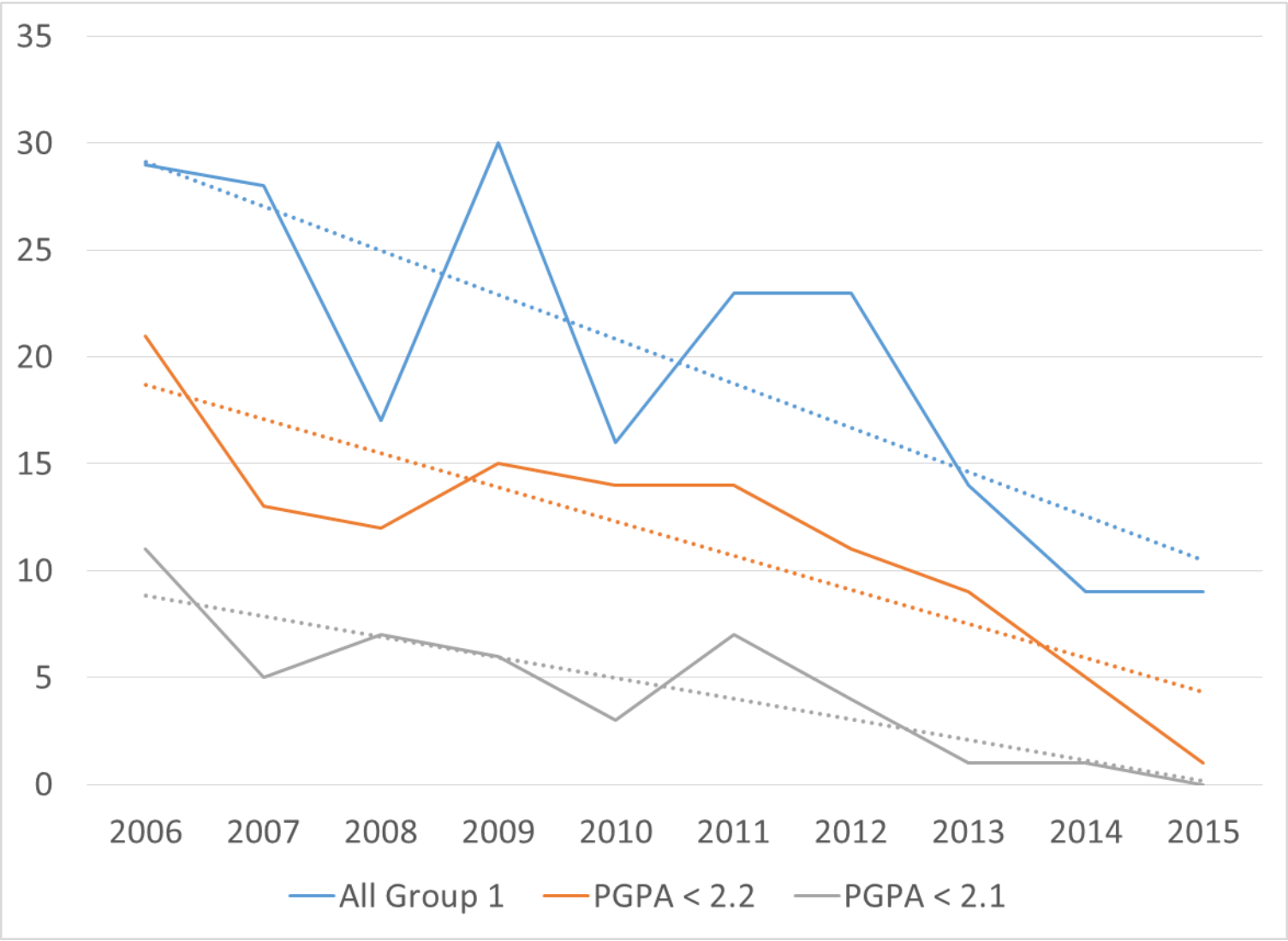
|      | Students | Group 1<br>(PGPA < 2.3 and Other) |     | Group 2<br>(PGPA ≥ 2.3 and < 2.6) |     | Group 3<br>(PGPA ≥ 2.6) |     |
|------|----------|-----------------------------------|-----|-----------------------------------|-----|-------------------------|-----|
| 2006 | 157      | 29                                | 18% | 43                                | 27% | 85                      | 54% |
| 2007 | 156      | 28                                | 18% | 44                                | 28% | 81                      | 52% |
| 2008 | 152      | 17                                | 11% | 65                                | 43% | 69                      | 45% |
| 2009 | 159      | 30                                | 19% | 63                                | 40% | 66                      | 42% |
| 2010 | 148      | 16                                | 11% | 60                                | 41% | 72                      | 49% |
| 2011 | 163      | 23                                | 14% | 49                                | 30% | 91                      | 56% |
| 2012 | 167      | 23                                | 14% | 52                                | 31% | 92                      | 55% |
| 2013 | 154      | 14                                | 9%  | 52                                | 34% | 88                      | 57% |
| 2014 | 147      | 9                                 | 6%  | 51                                | 35% | 87                      | 59% |
| 2015 | 152      | 9                                 | 6%  | 47                                | 31% | 96                      | 63% |

# Group 1 Special-Talent Student-Athletes by PGPA Band, 2006-2015

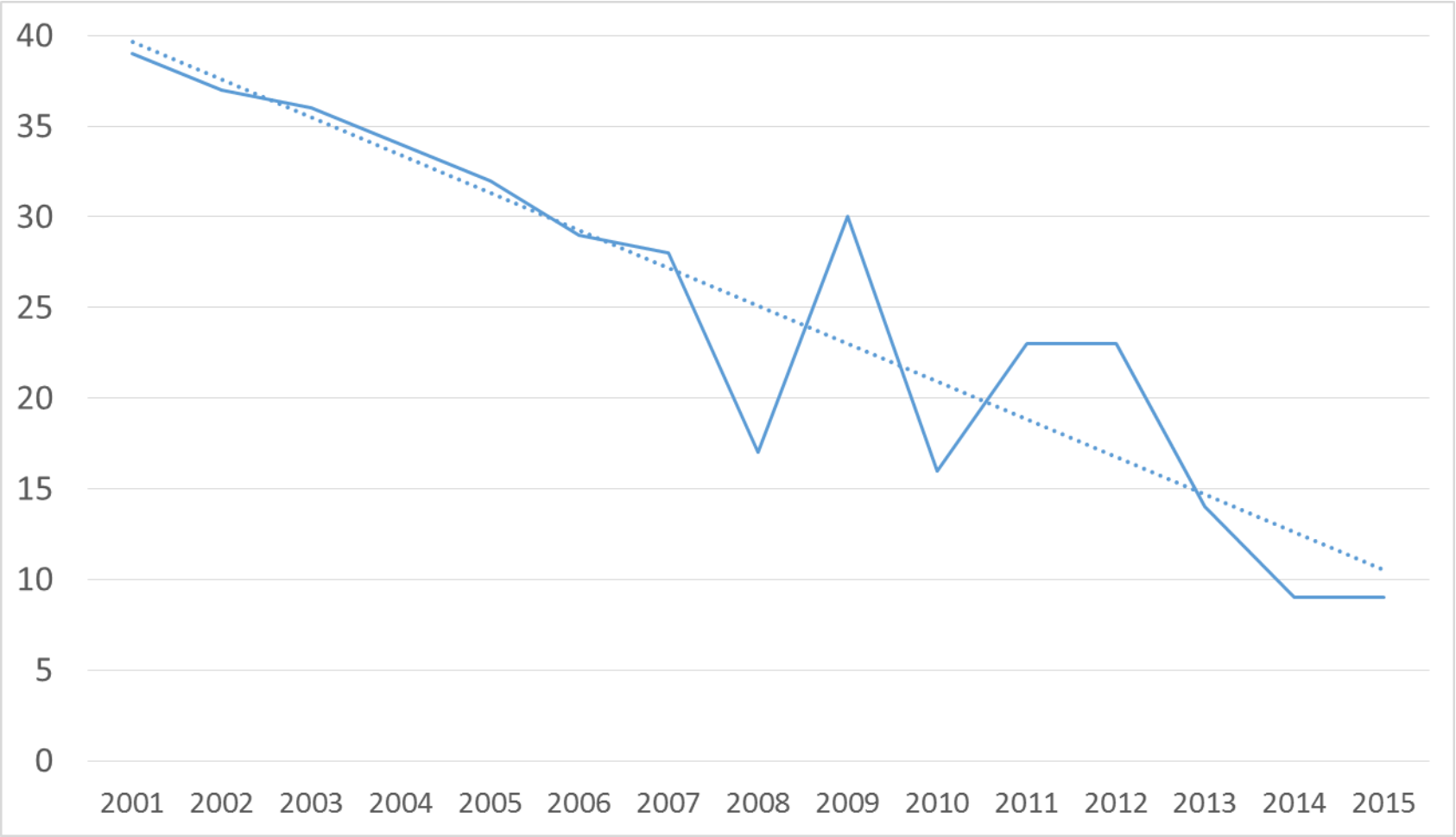
|      | Students | PGPA < 2.1 |    | PGPA < 2.2<br>(Includes PGPA < 2.1) |     | PGPA < 2.3<br>(Includes PGPA < 2.2) |     |
|------|----------|------------|----|-------------------------------------|-----|-------------------------------------|-----|
| 2006 | 157      | 11         | 7% | 21                                  | 13% | 29                                  | 18% |
| 2007 | 156      | 5          | 3% | 13                                  | 8%  | 28                                  | 18% |
| 2008 | 152      | 7          | 5% | 12                                  | 8%  | 17                                  | 11% |
| 2009 | 159      | 6          | 4% | 15                                  | 9%  | 30                                  | 19% |
| 2010 | 148      | 3          | 2% | 14                                  | 9%  | 16                                  | 11% |
| 2011 | 163      | 7          | 4% | 14                                  | 9%  | 23                                  | 14% |
| 2012 | 167      | 4          | 2% | 11                                  | 7%  | 23                                  | 14% |
| 2013 | 154      | 1          | 1% | 9                                   | 6%  | 13                                  | 8%  |
| 2014 | 148      | 1          | 1% | 5                                   | 3%  | 9                                   | 6%  |
| 2015 | 152      | 0          | 0% | 1                                   | 1%  | 9                                   | 6%  |



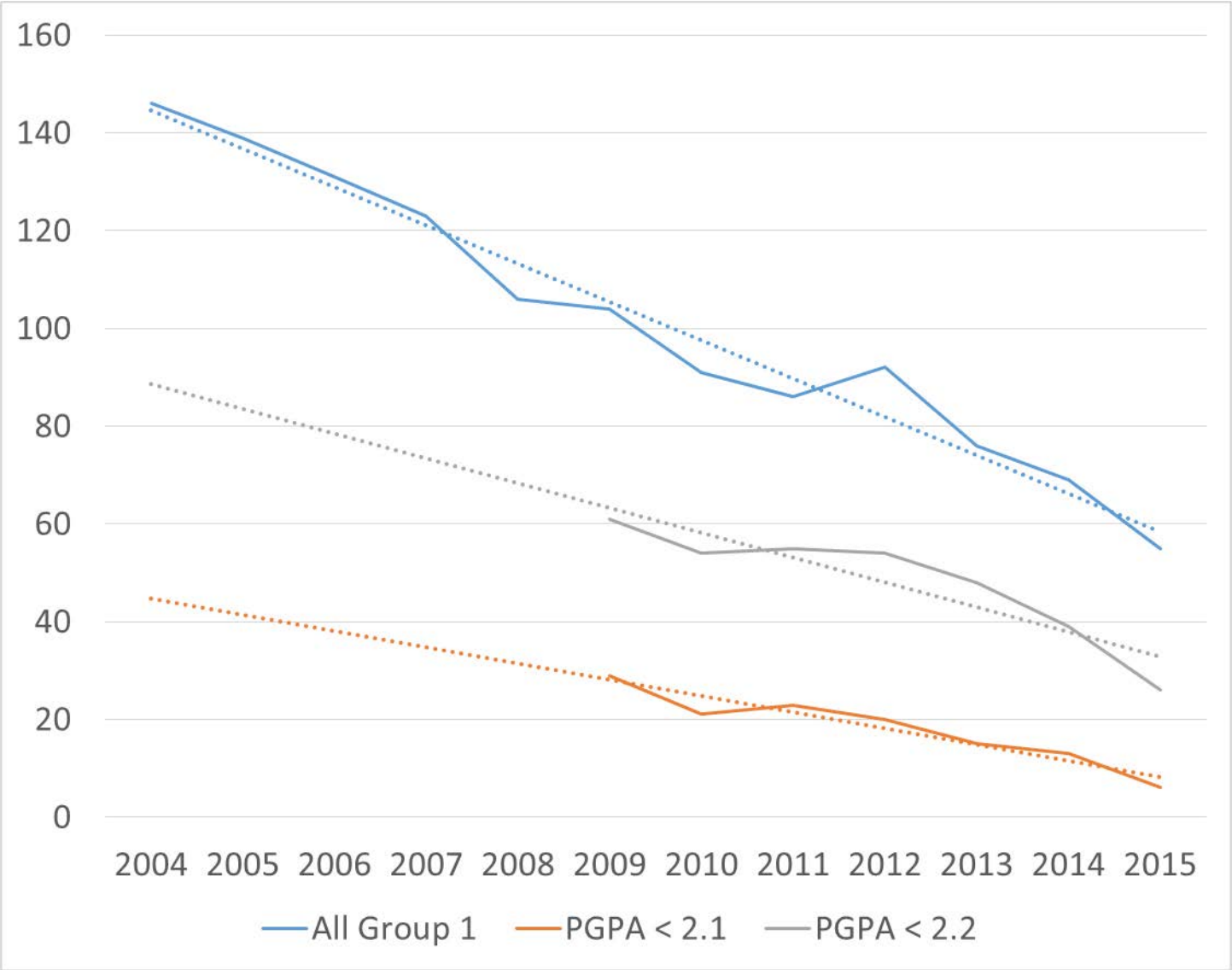
# Group 1 Special-Talent Student-Athletes by PGPA Band, 2006-2015



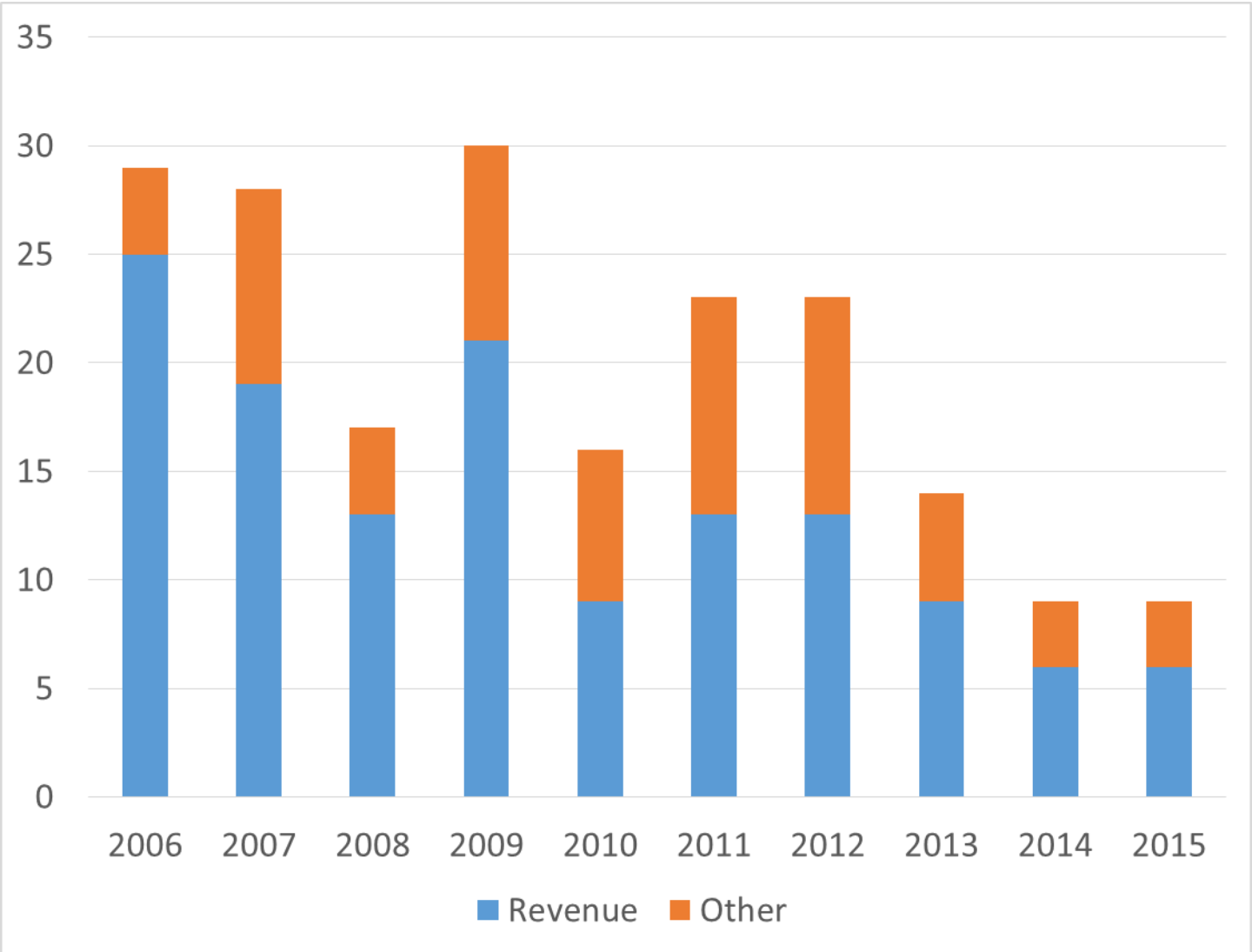
# Student-Athletes Requiring Faculty Review, 2001-2015



# Student-Athletes Requiring Faculty Review—Four Classes



# Group 1 Student-Athletes by Revenue and Other Program, 2006-2015



# Group 1 Revenue as Share of Total Revenue Enrolled, 2006-2015



# Protected and Confidential Student Information

# Course Enrollments by Department, Class Entering 2014

- What courses did students reviewed by the Committee on Special Talent take during their first year at UNC?
- What courses did other students take?
- For students entering in 2014:

| Department            | Group 1 | Comp 1 | Comp 2 | Comp 3 | Comp 4 | Comp 5 | Arts 1 | Arts 2 |
|-----------------------|---------|--------|--------|--------|--------|--------|--------|--------|
| Different courses     | 58      | 65     | 68     | 63     | 59     | 63     | 56     | 60     |
| Different departments | 19      | 27     | 28     | 27     | 24     | 24     | 18     | 24     |
| At least one FYS      | 9       | 5      | 8      | 6      | 8      | 6      | 3      | 2      |